



All inclusive package

MUSIC  DEALER DAYS
by SOMM – Society Of Music Merchants e.V.

Special Offer 2025

	benefits	Charge (EUR _{net})
All inclusive package	Floor space (m ²) incl.	
	❶ Furnishings (standard equipment*)	
	❶ 3kW feeder incl. electric power consumption	
	❶ Carpet incl. cleaning	
	❶ Catering (all day 06. + 07.03.25)	
	❶ Exclusive Get-Together Build-up day (05.03.25)	
	❶ Exclusive Reception (06.03.25)	
	❶ Dealer-Network (EU)	
	❶ Media	
	❶ Branch marketing	
	❶ 1 VIP-Ticket (AAA – Access all Areas)	
	❶ MIBKON – Branch congress	
	❶ Storage	
❶ WIFI		
		200,00 EUR / m²

	Additional benefits	Charge (EUR _{net})
VIP-Ticket (AAA)	❶ additional Ticket (Access all Area) per Person	200,00
	❶ Customised Compliance Workshop per Person	99,00
	❶ Workshop-Spaces	upon request
	❶ Advertising panels / displays	upon request
	❶ Special spaces	upon request

Floor Space:

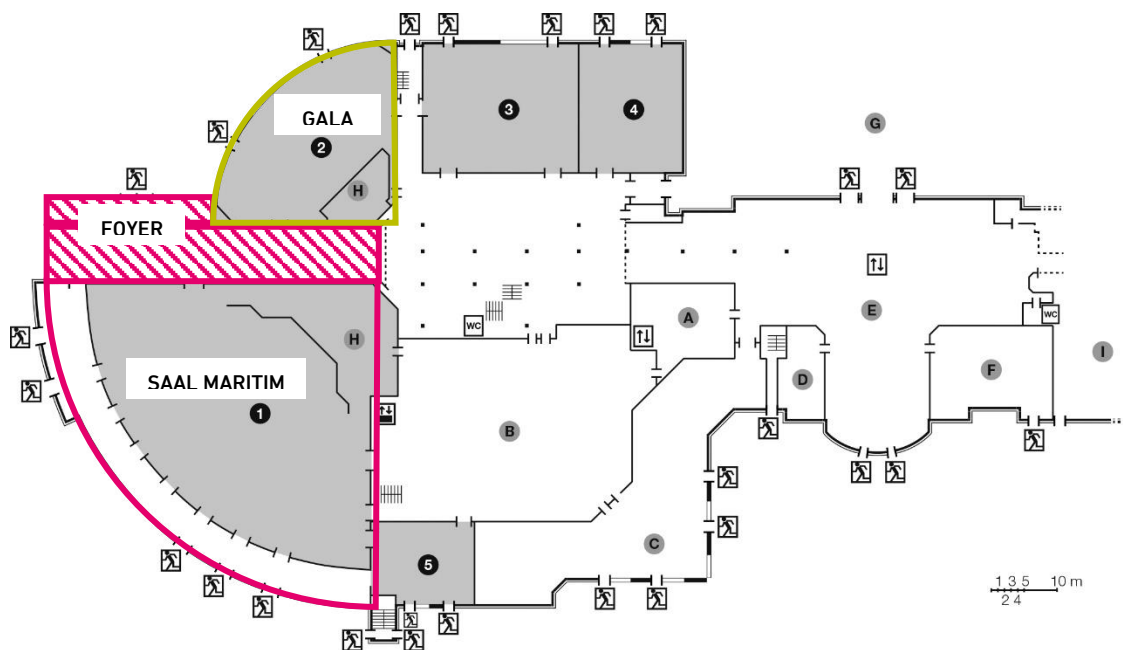
- ❶ Smaller floor space (**Meet & Greet Corner**) with 6 m² can only be booked on the gallery in the Maritim ballroom.
- ❶ Floor space (**pop-up spaces**) in the Maritim ballroom and on the gallery can be booked from a minimum area of 9 m². (The minimum stand depth is 3 metres).

*Furnishings (standard equipment

- ❶ Depending on the floor space, the basic equipment of a floor space includes
 - 6m²: 1 Conference table (without skirting) + 2 conference chairs
 - ab 9 m²: 2 Conference table (without skirting) + 2 conference chairs
 - ab 21 m²: 4 Conference table (without skirting) + 4 conference chairs
 - ab 41 m²: 6 Conference table (without skirting) + 6 conference chairs

Ballroom Maritim

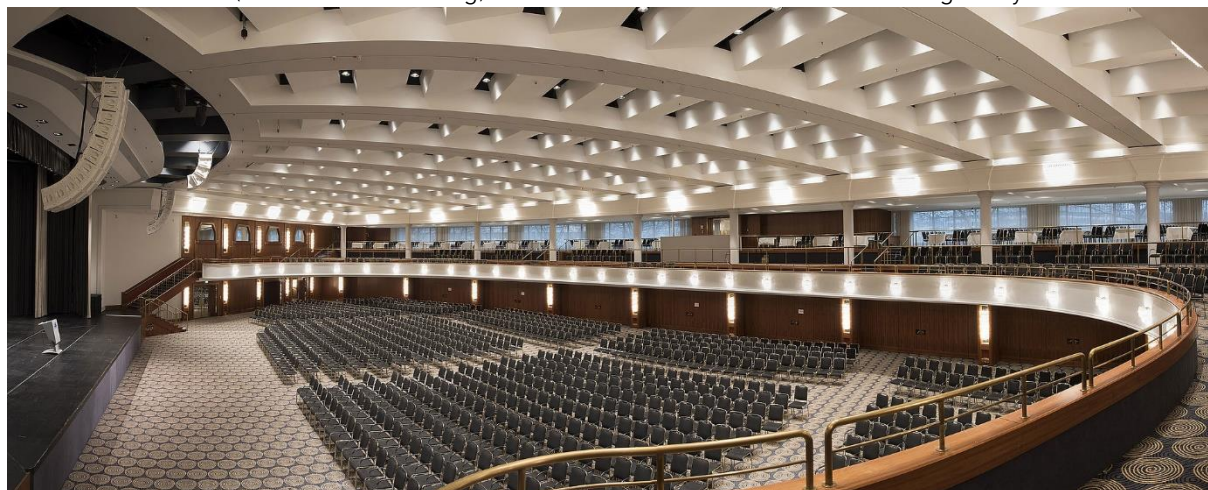
Sketch/layout



- | | | |
|------------------|---------------------------------|---|
| 1 Saal Maritim | A Bistro La Marée | F Pianobar |
| 2 Saal Beethoven | B Wirtschaftsräume/service area | G Zufahrt Hotel/Tiefgarage/access hotel/ground parking |
| 3 Saal Schumann | C Restaurant Rôtisserie | H Bühne/stage |
| 4 Saal Reger | D Café Brasserie | I Zum Dampfbad, Schwimmbad, Fitness- und Wellnessbereich/access to steam bath, pool, fitness- and wellness area |
| 5 Saal Liszt | E Hotelhalle/foyer | |

BON - EG

Ballroom Maritim (conference seating) / Ballroom Maritim incl. view of the gallery



Contact

Wolfgang Lücke

Head of Sales MUSIC DEALER DAYS by SOMM

E-Mail: SalesSDD@somm.eu

Mobile: +49(0)151 – 21 59 32 34